

## [NASA and NOAA confirm Global Temperature standstill continues](#)

Finalmente un documento congiunto NASA e NOAA

<http://wattsupwiththat.com/2014/01/23/newsbytes-nasa-noaa-confirm-global-temperature-standstill-continues/>

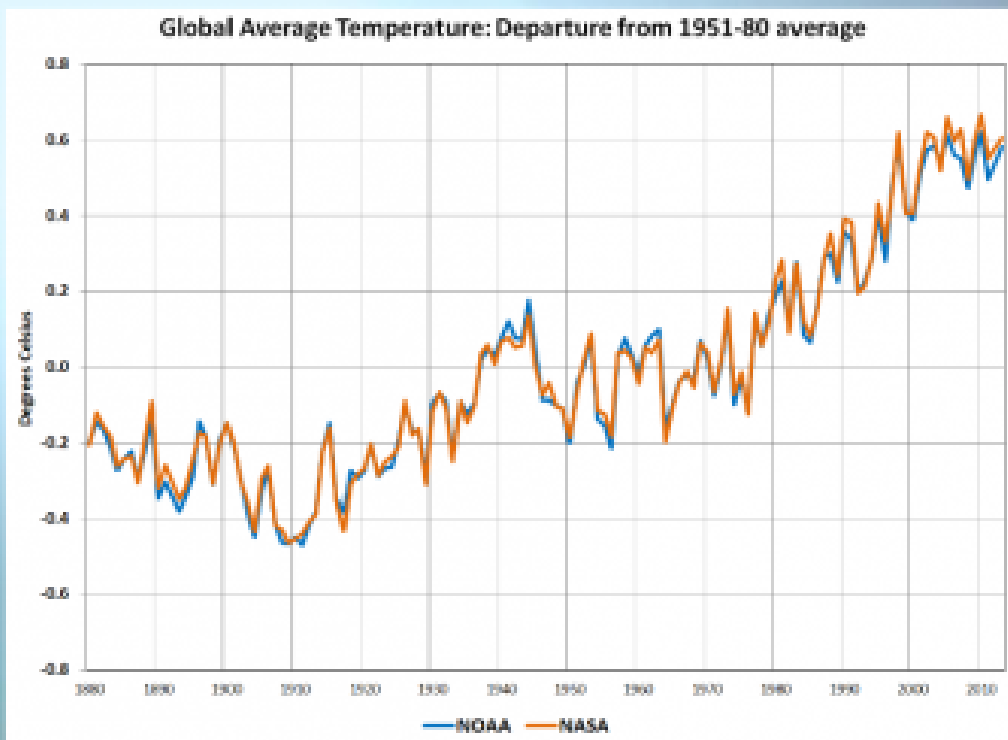
qui il documento in PDF

[http://www.nasa.gov/sites/default/files/files/NOAA\\_NASA\\_2013\\_Global\\_Temperatures\\_Joint\\_Briefing.pdf](http://www.nasa.gov/sites/default/files/files/NOAA_NASA_2013_Global_Temperatures_Joint_Briefing.pdf)

qui alcune delle slide piu significative



# Temperature Time Series Comparison



Le temperature non crescono più, anzi ...

## NOAA/NASA Top Ten Years on Record

### NASA

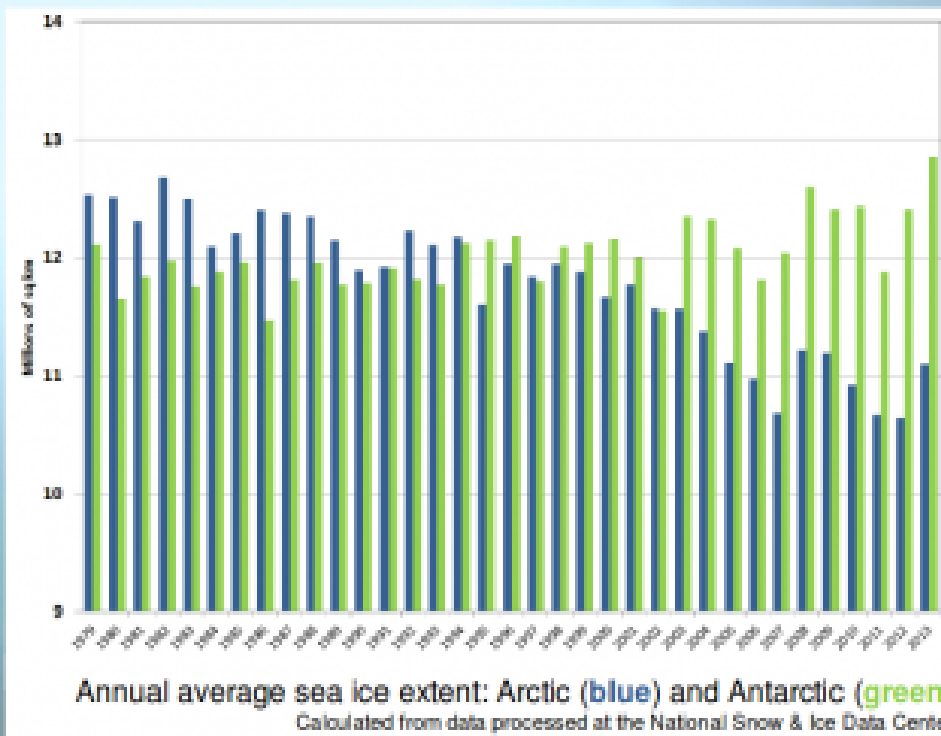
Rank	Year	51-80 Anomaly
1 (tie)	2010	0.67°C
1 (tie)	2005	0.66°C
3	2007	0.63°C
4 (tie)	2002	0.62°C
4 (tie)	1998	0.62°C
6	2003	0.61°C
7 (tie)	2013	0.60°C
7 (tie)	2009	0.60°C
7 (tie)	2006	0.60°C
10	2012	0.58°C

### NOAA

Rank	Year	51-80 Anomaly
1	2010	0.62°C
2	2005	0.61°C
3	1998	0.59°C
4 (tie)	2003	0.58°C
4 (tie)	2013	0.58°C
6	2002	0.57°C
7 (tie)	2006	0.56°C
7 (tie)	2009	0.56°C
9	2007	0.55°C
10	2004	0.54°C

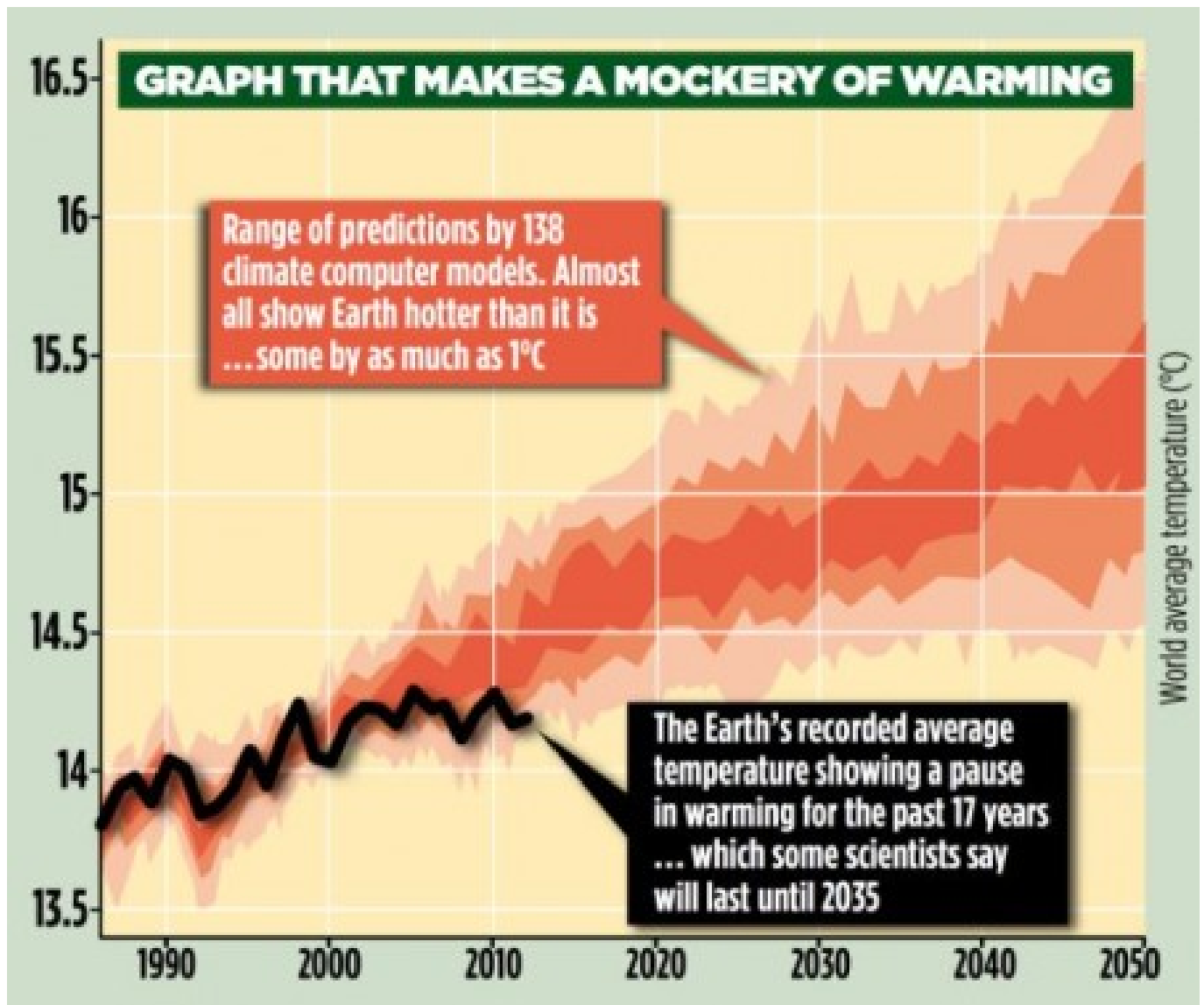
Le anomalie calano

# Polar Sea Ice Extent



- **Arctic in 2013:**
  - Average March extent: 5<sup>th</sup> smallest on record
  - Average Sept. extent: 6<sup>th</sup> smallest on record
  - much below normal throughout the year
- **Antarctic in 2013:**
  - Average March extent: 2<sup>nd</sup> largest on record
  - Average Sept. extent: largest on record
  - above normal to much above normal throughout the year

i ghiacci crescono ...



i modelli IPCC descrivono sempre più una realtà virtuale



e LUI predica nel Deserto ... oops nella STEPPA GHIACCIATA.

Luigi